

S200-D, 480Y/277 VAC

Supplemental protectors

UL 1077, CSA 22.2, No. 235

D



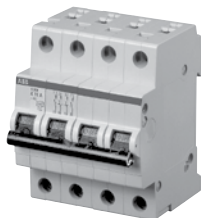
S201-D



S202-D



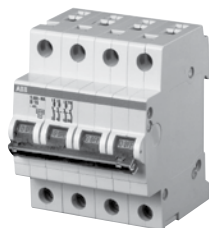
S203-D



S204-D



S201-DNA



S203-DNA

No. of poles	Rated current	Catalog number	No. of poles	Rated current	Catalog number	
1	0.5	S201-D0.5	3	0.5	S203-D0.5	
	1	S201-D1		1	S203-D1	
	1.6	S201-D1.6		1.6	S203-D1.6	
	2	S201-D2		2	S203-D2	
	3	S201-D3		3	S203-D3	
	4	S201-D4		4	S203-D4	
	6	S201-D6		6	S203-D6	
	8	S201-D8		8	S203-D8	
	10	S201-D10		10	S203-D10	
	13	S201-D13		13	S203-D13	
	16	S201-D16		16	S203-D16	
	20	S201-D20		20	S203-D20	
	25	S201-D25		25	S203-D25	
		32		S201-D32	32	S203-D32
		40		S201-D40	40	S203-D40
		50		S201-D50	50	S203-D50
		63		S201-D63	63	S203-D63
	1 + NA	0.5		S201-D0.5NA	3 + NA	0.5
1		S201-D1NA	1	S203-D1NA		
1.6		S201-D1.6NA	1.6	S203-D1.6NA		
2		S201-D2NA	2	S203-D2NA		
3		S201-D3NA	3	S203-D3NA		
4		S201-D4NA	4	S203-D4NA		
6		S201-D6NA	6	S203-D6NA		
8		S201-D8NA	8	S203-D8NA		
10		S201-D10NA	10	S203-D10NA		
13		S201-D13NA	13	S203-D13NA		
16		S201-D16NA	16 <td S203-D16NA			
20		S201-D20NA	20	S203-D20NA		
25		S201-D25NA	25	S203-D25NA		
		32	S201-D32NA	32		S203-D32NA
		40	S201-D40NA	40		S203-D40NA
		50	S201-D50NA	50		S203-D50NA
		63	S201-D63NA	63		S203-D63NA
2		0.5	S202-D0.5	4		0.5
	1	S202-D1	1		S204-D1	
	1.6	S202-D1.6	1.6		S204-D1.6	
	2	S202-D2	2		S204-D2	
	3	S202-D3	3		S204-D3	
	4	S202-D4	4		S204-D4	
	6	S202-D6	6		S204-D6	
	8	S202-D8	8		S204-D8	
	10	S202-D10	10		S204-D10	
	13	S202-D13	13		S204-D13	
	16	S202-D16	16		S204-D16	
	20	S202-D20	20		S204-D20	
	25	S202-D25	25		S204-D25	
		32	S202-D32		32	S204-D32
		40	S202-D40		40	S204-D40
		50	S202-D50		50	S204-D50
		63	S202-D63		63	S204-D63

Tripping characteristic D

UL 1077
480Y/277 VAC
6 kA

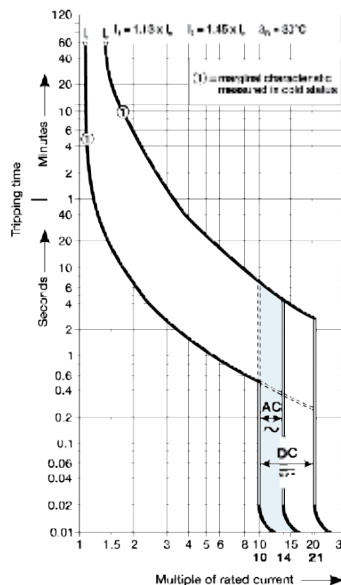
Inductive loads

- D Curve
- Designed for allowing higher in-rush currents during system start up
- Example: motors, transformers

Accessories & technical data

Accessories – See page 15.31 - 15.34

Technical data – See page 15.35 - 15.36



Note: Switching neutral is noted by "NA" in the catalog number.